

FRIENDSHIP

CHRISTIAN SCHOOL

SPECIALIZED *Learning Center*

ACADEMIC SUCCESS CENTER (ASC)

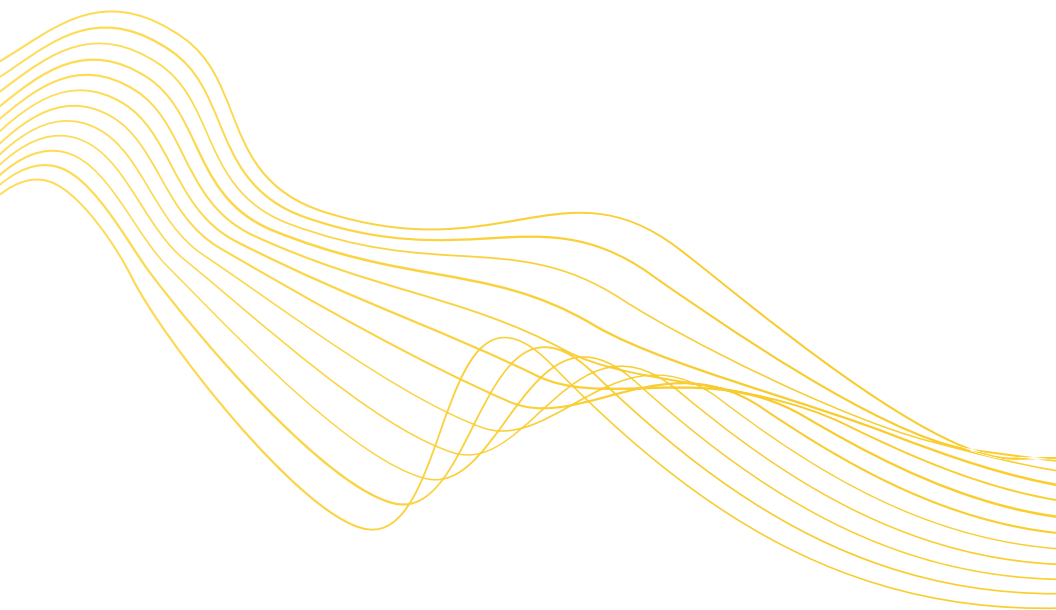
for students with diagnosed
Learning Difficulties

FOCUS LEARNING CENTER (FLC)

for students with
Intellectual Disabilities

www.FRIENDSHIPCHRISTIAN.net
FCSmail@friendshipchristian.net
(919) 872-2133





FCS admits students of any race, color, national and ethnic origin to all the rights, privileges, programs and activities generally accorded or made available to students at the school. It does not discriminate on the basis of race, color, national and ethnic origin in the administration of its educational policies, admission policy, financial aid policy, athletic and other school-administered programs.



Table of Contents

Meet the Team

Eligibility

Academic Success Center

Objectives

Resources

Accommodations

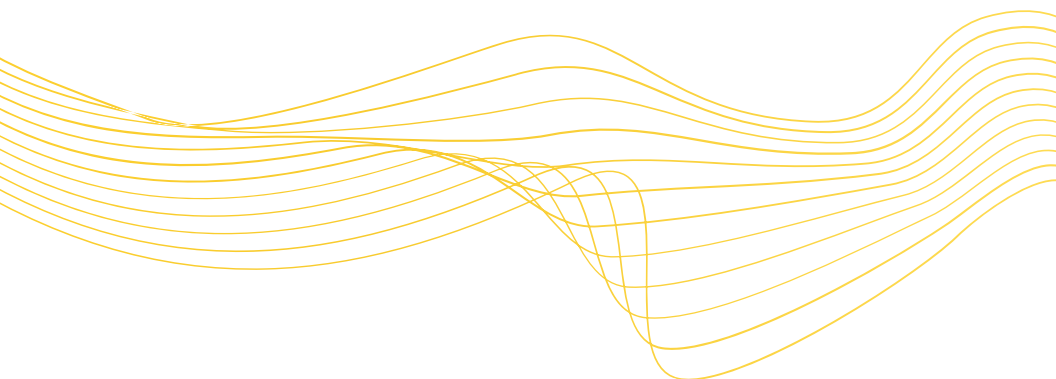
Modifications

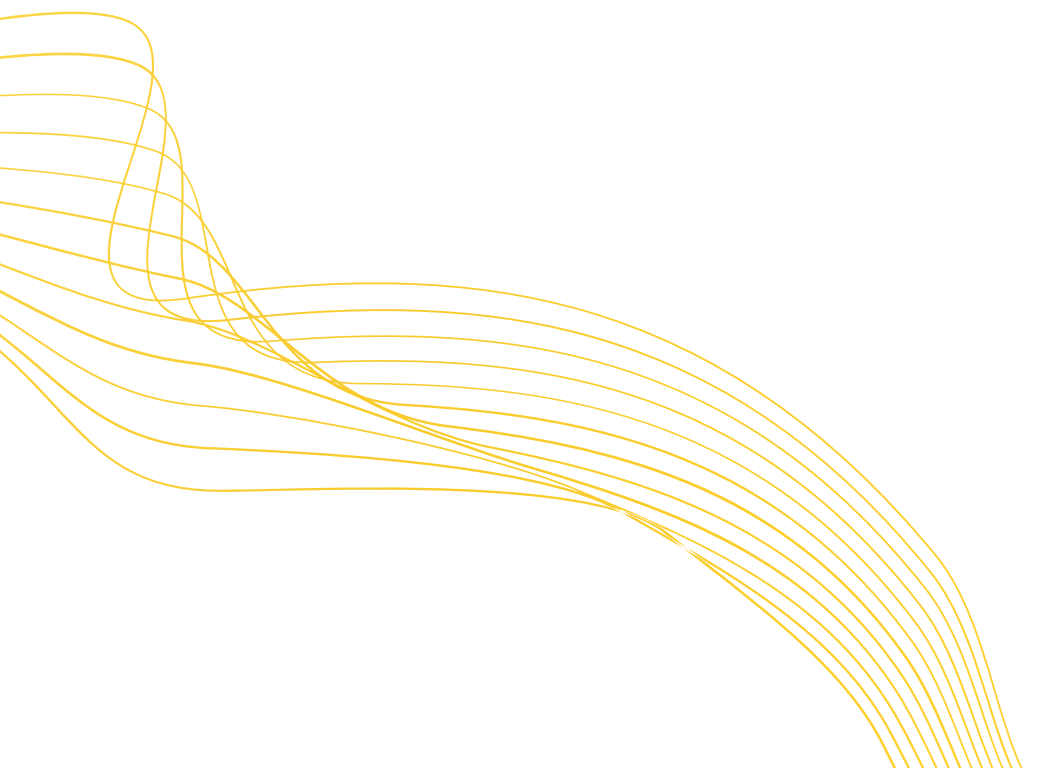
Focus Learning Center

Diploma Options

General Policies

Fees







Meet the Team

DIRECTOR



Renee Hemric, M Ed, Special Education
BA, Elementary Education and Bible
rhemic@friendshipchristian.net

TEACHING STAFF



Mary Baxter, M Ed, Christian Education
BS, Elementary Education
mbaxter@friendshipchristian.net



Cheryl Boehme, M Ed, Special Education
BS, Elementary Education and English
cboehme@friendshipchristian.net



Grace Meng, MS Recreation and Resources Administration
BA, English Language
gmeng@friendshipchristian.net



Kristie Pacheco, M Ed, Special Education
BS, Elementary Education
kpacheco@friendshipchristian.net



Carrie Spruill, BS, Special Education
Minor, Elementary Education
cspruill@friendshipchristian.net



*Friendship Christian School
is committed to partnering
with families
to develop the spiritual
and academic growth
of all students.*



Eligibility

Determination of Eligibility

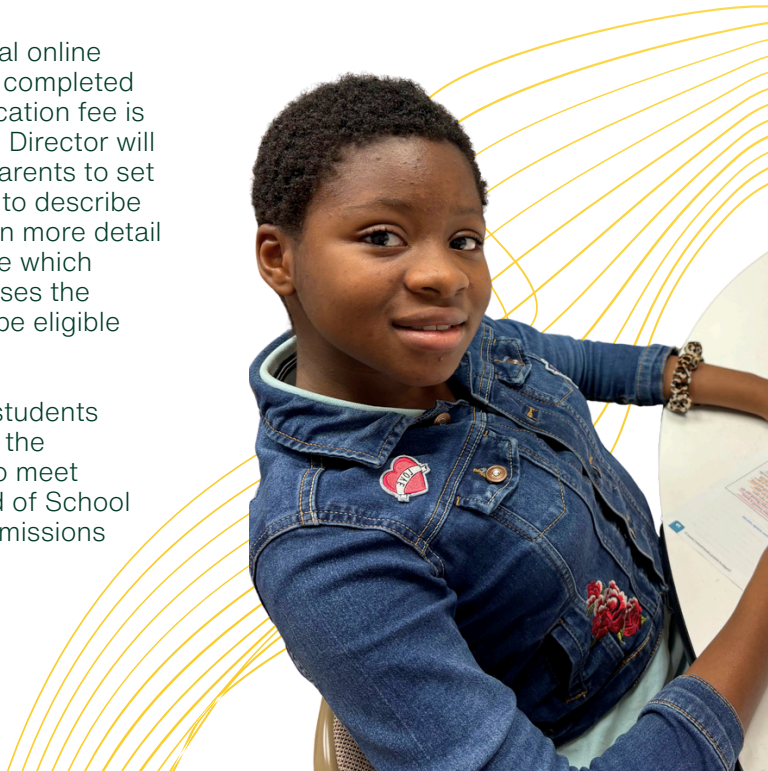
Students applying to FCS for the first time and wishing to be considered for enrollment in the ASC or the FLC program must submit a current IEP or psycho-educational testing (taken within the last 3 years).

If the SLC Director determines the student is eligible, the school will contact the parents and advise them to proceed with the online application process.

Parents should check the boxes in the online application indicating interest in the ASC program, Tutorial Study Hall, or the FLC program.

Once the initial online application is completed and the application fee is paid, the SLC Director will contact the parents to set up a meeting to describe the program in more detail and determine which resource classes the student may be eligible for.

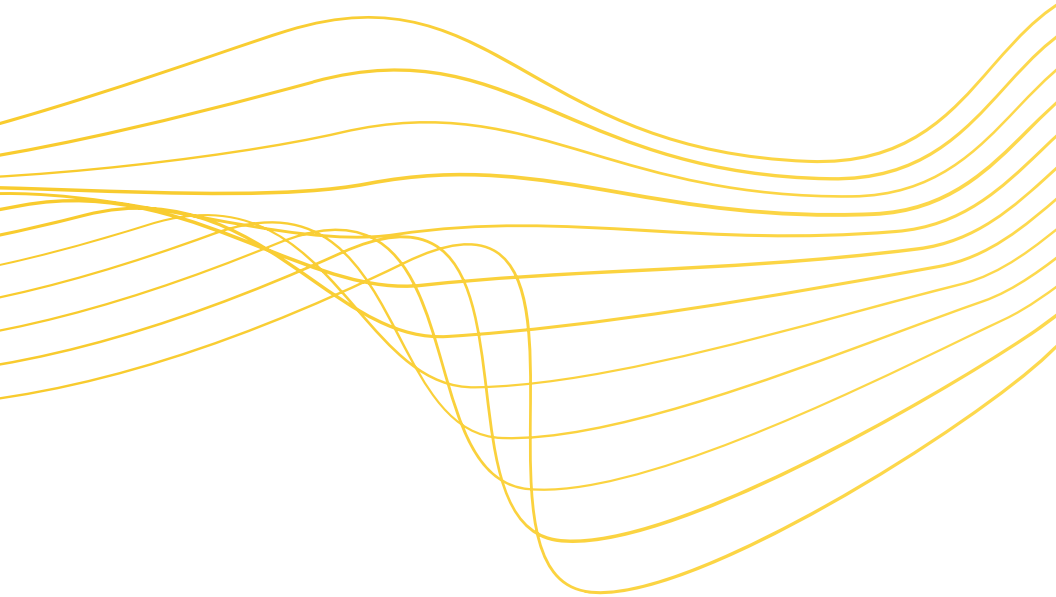
Parents and students will also have the opportunity to meet with the Head of School during the admissions process.





*I will praise thee;
for I am fearfully and
wonderfully made...*

Psalm 139:14a





Academic Success Center

The Academic Success Center (ASC) is designed to assist students with a documented learning disability, ADHD, or a processing deficit. While these students have the potential to learn, they may struggle in the regular classroom setting. The ASC program aims to encourage students who may have become frustrated with learning by helping them realize their true abilities. When students recognize their strengths and are given learning strategies, they often succeed in areas of weakness. Students are carefully nurtured and encouraged but also challenged to develop strong study skills and work habits.





Academic Success Center *Objectives*

To provide assistance in areas of academic difficulty

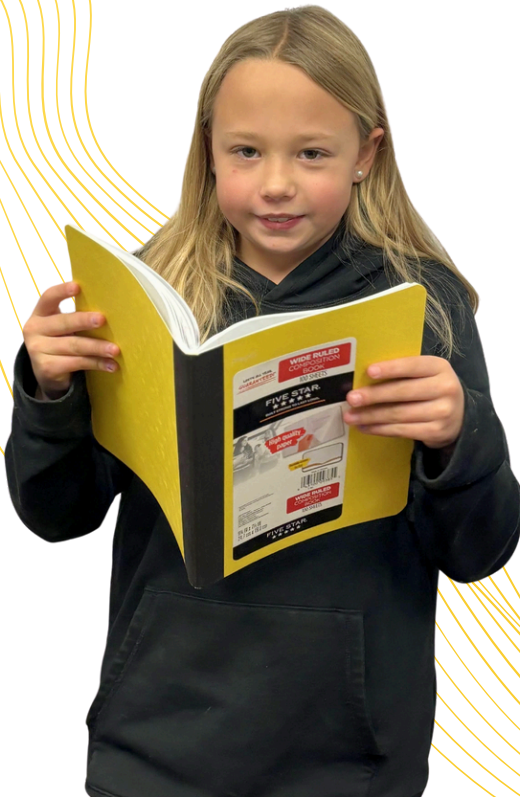
To determine appropriate accommodations and/or modifications for students in general education classes

To assist the student in developing study skills, time management skills, and personal organizational strategies

To participate in scheduled parent/teacher conferences when requested

To assist parents and faculty members in understanding best practices for instructing students with disabilities

To prepare students to be successful in general education classes





Academic Success Center *Resources*

Elementary

Remedial Reading is offered to students who are currently not reading on grade level. The goal is to help elementary students gain confidence in reading fluency and comprehension through systematic teaching of phonics and decoding skills.

6th - 12th Grade

Tutorial Study Hall is available to students who can keep up in the regular classroom but need daily assistance with study skills, organization, additional time for test-taking, and occasional re-teaching of material.

3rd - 8th Grade

Resource classes are available for students who need small group instruction with a teacher who specializes in teaching students with learning differences. The classes offered are Resource Math and Resource English. These take place at the same time as the regularly scheduled grade-level classes in those subjects.

Students who have the accommodation of a separate setting may take their tests in the Testing Center.





Accommodations

Accommodations are alterations made in the way that academic content is presented or assessed, but does not alter the curriculum standards or grade level of the material. Accommodations are not noted on the student's report card.

Examples of accommodations:

Preferential seating

Allow students to take pictures of notes on the board

Allow calculator use

Allow students to use formulas

Do not deduct for spelling

Allow the use of audible books

Extended time for tests

Allow for separate settings for tests

Read aloud for tests





Modifications

Modifications are changes that are made to the curriculum for students with disabilities who are unable to master all of the content in a particular course. These modifications are documented on the student's report card and are only allowed if the student is receiving a general track diploma.

Examples of modifications include:

Reduce the amount of information the student is required to master for tests/quizzes

Alter writing and reading assignments to match the student's ability

Utilize a modified grading scale

Adjust spelling and vocabulary lists





*...marvellous are
thy works;
and that my soul
knoweth right well.*

Psalm 139:14b



Focus Learning Center

FCS is blessed to have a program for students who have intellectual disabilities, Autism, Down Syndrome, etc. Students receive core instruction in small resource classes targeted to their specific learning needs. They may participate in elective classes as well as inclusion opportunities throughout the day.

Students may enter the FLC program in the 6th grade. The program concentrates on general academics and life skills. Careful planning and review of the student's past academic performance and current cognitive and achievement levels assist in making this decision. These students are eligible to receive a diploma in an Occupational Course of Study.

Students enrolled in the FLC program participate in the independent living skills program which includes a working coffee shop, an opportunity to learn gardening skills in the FLC garden, basic household management skills including cooking and baking, laundry, and other important life management skills.





Diploma *Options*

College Prep Course of Study

The College Preparatory (CP) degree contains CP courses and honors courses with dual credit availability and is conferred at graduation based on the student having fulfilled the following course, credit, ACT, and Christian Service requirements.

General Course of Study

A General degree is designed for students with documented learning disabilities who require a reduced course load.

This course of study contains college preparatory and general level courses and may require a student to attend a 2-year college or take additional courses before or during their freshman year of college.

The General degree is conferred at graduation based on the student having fulfilled the following course, credit, ACT, and Christian Service requirements.





Diploma *Options*

Occupational Course of Study

The Occupational degree is designed for students with documented intellectual disabilities who require extensive assistance with their learning needs.

This course of study contains specialized Occupational Course of Study (OCS) courses on core subjects with a specific focus on post-school employment and independent living.

Successful completion of this course of study does not meet the requirements for entrance to a four-year college or university. However, it does allow for continued training in post-secondary institutions with programs that specialize in intellectual disabilities.





General Policies

Individual Student Plan (ISP)

Only students enrolled in a resource class and/or Tutorial Study Hall are eligible for an Individualized Student Plan (ISP) generated by the school. This ISP is an analysis and summary of the student's strengths and weaknesses, based on testing done by a licensed psychologist, yearly standardized testing, and the FCS faculty.

The ISP team (regular classroom teacher, ASC teacher, and parents) will discuss and agree upon the following:

Diploma options (for students in 9th-12th grade)

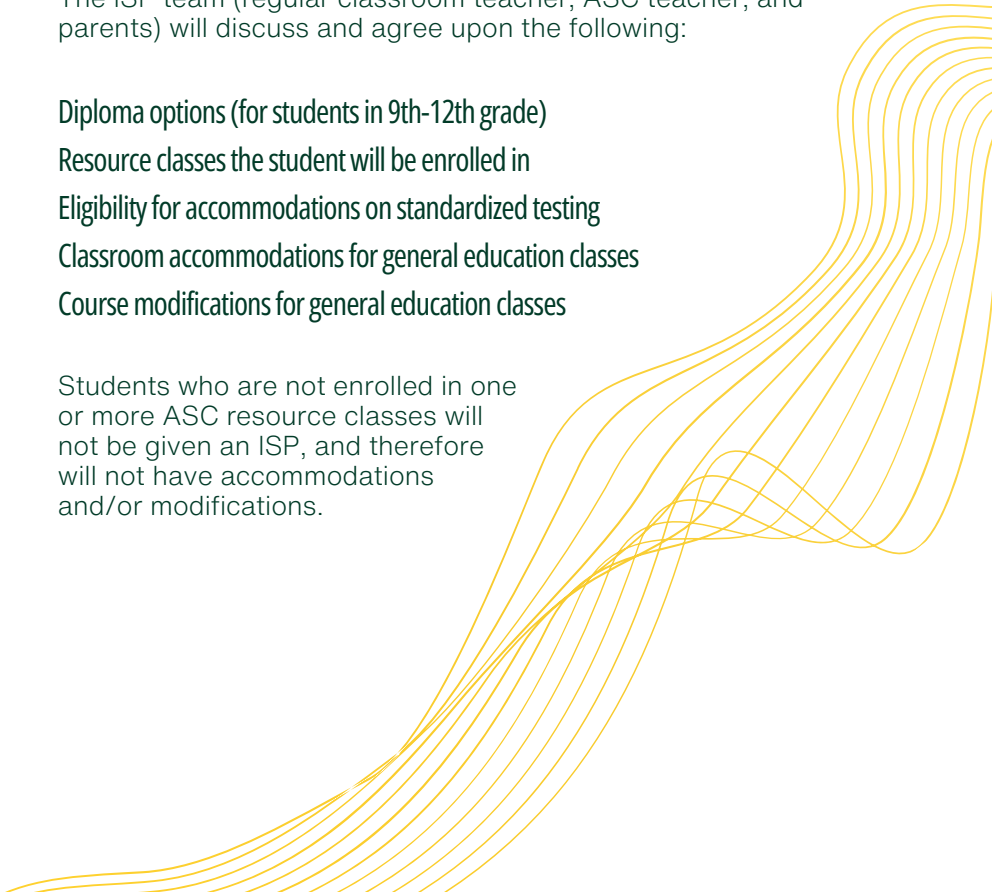
Resource classes the student will be enrolled in

Eligibility for accommodations on standardized testing

Classroom accommodations for general education classes

Course modifications for general education classes

Students who are not enrolled in one or more ASC resource classes will not be given an ISP, and therefore will not have accommodations and/or modifications.





Fees

Fees are updated yearly and are available on the Tuition Fee Schedule. Visit www.FriendshipChristian.net to learn more.

Academic Success Center

The cost of the program is dependent on the number of classes taken. The fee will be added to the student's annual tuition and distributed according to the desired payment plan.

Focus Learning Center

The tuition for this program is separate from the regular school tuition due to the smaller teacher vs. student ratio.





*Let us hear the conclusion
of the whole matter:*

*Fear God,
and keep his commandments:
for this is the whole duty of man.*

Ecclesiastes 12:13

FRIENDSHIP

CHRISTIAN SCHOOL